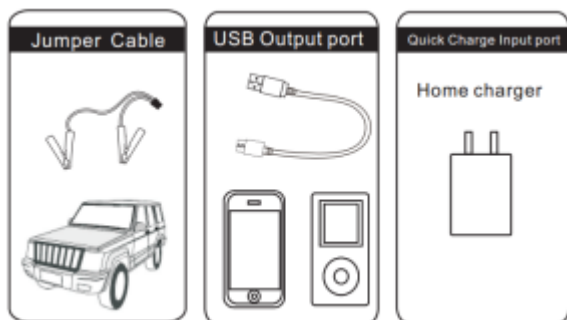
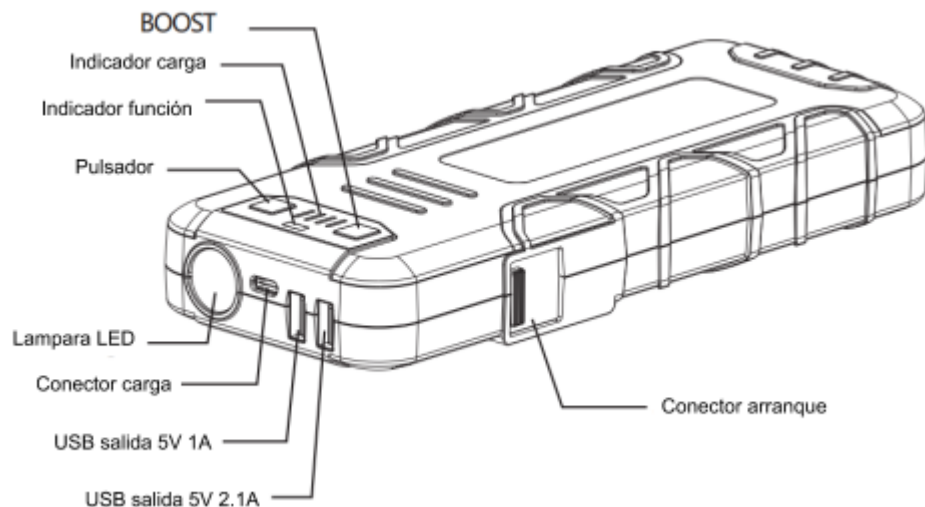




LITHIUM
LT17

Always follow basic safety precautions when using electrical equipment. Read all instructions carefully, save this instruction manual for easy reference.

A. PRODUCT DESCRIPTION.



OPERATION GUIDE

Indicator:

Press the key to know the charging status of the LT-17.

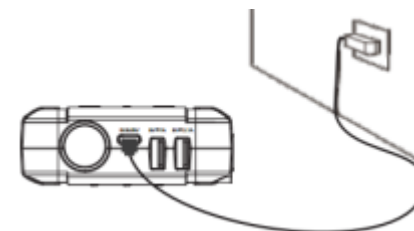
Indicator	None	1 fixed	2 fixed	3 fixed	4 fixed
Battery level	0%	25%	50%	75%	100%

During the charging period the indicators flash one by one, and will remain fixed when the indicator's charge level is reached.

All indicators turn off when the maximum charge level is reached.

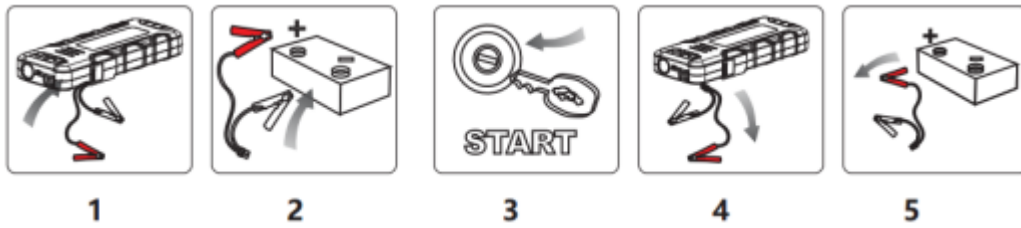
LOADING INSTRUCTIONS.

1. Connect the Micro USB cable to a universal charger and the charger to an outlet.
2. Connect the Micro USB cable to the charging input on the LT-17.



INSTRUCTIONS FOR STARTING A VEHICLE.

1. Make sure that the LT-17 has a full charge, 100%.
2. Connect the LT-17 to the vehicle battery. Red clamp on the positive (+) terminal and vegra clamp on the negative (-) terminal.
3. Start the vehicle.
4. Disconnect the LT-17 cable, blue connector.
5. When the vehicle has started, disconnect the red clamp and then the black one. Let the vehicle's engine run.



Incidents at startup:

Green light on. Correct connection, the LT-17 is ready to start.

Red light on with acoustic indication. Incorrect battery connection, polarity is reversed, or battery is shorted. Do not attempt to start the vehicle.

Red light on with an acoustic indication. The battery is short-circuited or the connection fails, check the connection.

Green light blinks. The vehicle battery has very low voltage, press the BOOST button to start the start. The green light will stay on and you have 30 seconds to start the vehicle.

No indicator lights up. Fully discharged vehicle battery. Verify that the connections do not fail. Press the BOOST button to start booting. The green light will stay on and you have 30 seconds to start the vehicle.

Flashing red and green indicator. 4 vehicle start attempts have been exceeded, you must wait 120 seconds for a new attempt.

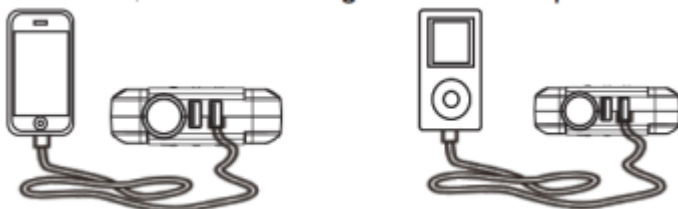
If you cannot start the vehicle, consult a professional for an inspection. Do not try to start it without diagnosis.

CHARGING INSTRUCTIONS FOR MOBILE PHONES, TABLETS OR OTHER EQUIPMENT.

Connect the 5V USB cable to the connection of the LT-17

Connect the cable to the charging input of the device.

Press the load button.



FLASHLIGHT

To activate the flashlight press the SWITCH button for 3 seconds, then you can toggle the operating modes with repeated presses. Possible modes: normal, flashing, SOS and off.

B. TECHNICAL SPECIFICATIONS.

Dimension:	225 * 91 * 34mm
Weight:	650g
Battery capacity:	17000mAh (62.9Wh)
Outputs:	5V 1A; 5V 2. 1A; 12V starter
Input:	Fast charge (5V 2A; 9V 2A)
Time for full charge	4.5 Hours.
Starting current	500A
Maximum peak of starting current.	1200A
Working temperature.	-20 °C ~ 60 °C / - 4 °F ~ 140 °F

C. FAQ:

When the LT-17 does not detect the battery voltage in any way, what should I do?

Consult with an industry professional to check the vehicle's battery.

How many times can I start a vehicle?

Normally for 2.0L vehicles it is about 40 times.

How long does the LT-17 take to charge?

The maximum charging time is 4.5 hours.

How many times can I recharge a mobile phone?

It will depend on the battery capacity of your phone, for example an IPHONE 6 can be recharged about 7 times.

What is the useful life of the LT-17?

Approximately 3 to 5 years.

How long does the battery remain charged?

It can reach 6-12 months, although it is advisable to make a charge every 3 months.

D. ANOMALIES.

The LT-17 does not respond to any function keys.

Battery low-voltage protection has been activated, recharge the LT-17.

E. TOXIC OR HAZARDOUS SUBSTANCES.

Composition of toxic substances of LT-45.

Pb	Hg	Cd	Cr (Vi)	PBB	PBDE
0	0	0	0	0	0

0- Indicates that the content of dangerous substances is below the indications of the RoHs 2002/95 / EC directive.

F. DANGERS.

1. Please read the instruction manual carefully.
2. Use only a starter, it can carry risks.
3. Do not use the LT-17 with damaged cables.
4. Do not use the LT-17 as a vehicle battery.
5. Do not leave the LT-17 connected more than 30 seconds after the vehicle starts. It may cause damage to it.
6. Verify that the battery terminals of the vehicle are clean and free of defects, they can affect the proper start of the vehicle. It can also cause damage to the connection cables.
7. Do not attempt more than 3 starts in a row, damage to the LT-17 may result. Allow 2 to 5 minutes to wait between attempts.
8. Do not connect the two clips together.
9. Do not allow minors to use the starter unsupervised.
10. Do not use it as a toy.
11. Do not leave the LT-17 in humid places.
12. Do not soak or immerse the LT-17 in water or other liquids.
13. Do not use the LT-17 in explosive atmospheres or with gases or dust.
14. Do not disassemble the LT-17 or try to repair it if it is not an official service.
15. Do not expose the LT-17 to heat or fire.

16. Make sure someone is nearby if you are working on batteries.

17. Remove any metallic accessories such as bracelets, rings, ..., that may cause short circuits of the battery.

18. There will be no LT-17, and if it has defects, have it checked by a technical service.

19. Do not use it in places with temperatures above 60°C.

20. Load it only in environments with a temperature between 20 and 45°C.

21. Use only original or standard chargers for the charging port.

22. Do not use the LT-17 if it is charging.

23. If you have liquid leaks, it must be deposited in the appropriate recycling container.

24. Under extreme conditions, battery leakage can occur. If you notice a liquid coming from the product, do not handle it with your bare hands. In case of skin contact, wash with soap and water immediately. If the liquid comes into contact with the eyes, flush the eyes with running water for at least 10 minutes and get immediate medical attention.

25. This product contains LITHIUM and must be disposed of in the appropriate recycling container.

26. Do not recharge the LT-17 immediately after use, allow a few minutes.

27. Do not use jump leads for other uses.

WARRANTY INFORMATION.

We offer a limited warranty for this product against any defects in material and workmanship for a period of 12 months from the date of purchase by the end user / consumer. The warranty conditions are as follows:

The warranty will only be valid upon presentation of the purchase invoice linked to the serial number of the equipment. The date of purchase must also appear.

The guarantee does not cover defects due to misuse, incorrect installation, modification or manipulation of the product.

We are not responsible for damage caused by misuse or incorrect use of the equipment.

The warranty is limited to the repair of defective components.

In the event that the product is repaired or replaced, the warranty period will remain valid for the remaining period.

The warranty does not cover defects in accessories or batteries.



DECLARATION OF CONFORMITY

SOLTER SOLDADURA, SL NIF: B-17245127

Ctra. Nacional 260, KM 122

17530 CAMPDEVÀNOL (GIRONA) SPAIN

Declares that the device type: **LT-17**

All serial numbers.

They comply with the directives: **2014/35 / CE; 2014/30 / CE;**
2011/65 / CE;/ CE

And standards: **2006/66 EN 55015; EN 61000; EN 61547; IEC**
62321

